

# Storage Lockers

- ▶ Anti-Bacterial Powder Coating
- ▶ Robust Construction
- ▶ Welded Frame Design
- ▶ Reinforced Doors
- ▶ Sloping Top Option
- ▶ Integral Seats & Stands

These coloured lockers are manufactured to the highest specification.

Lockers are welded and riveted in construction. Semi concealed hinges are welded to the door and riveted to the frame, allowing easy replacement of doors. The range of doors are fully strengthened with a door stiffener. The carcass incorporates nesting holes on all sides and a return flange at the base for extra strength and to reduce floor damage. Lockers are manufactured using cold rolled steel. Material thickness specification 0.9mm doors and frame, 0.7mm carcass and shelves. Components are polyester powder coated prior to assembly to ensure all surfaces are protected.

UK manufactured products.

## Door Colour Options



All Lockers Supplied with Grey Carcass.

Special colour options available on application



# elite GUARD

Anti-Bacterial Powder Coating 

An effective secondary support to existing cleaning practices

elite GUARD - Anti-bacterial powder coating an effective solution to fight against bacterial contamination for the life of the coating. Independently tested and found to be 99.9% effective against MRSA and E-coli. Also shown to exhibit zero growth for fungi and moulds.

elite GUARD offers the healthcare, food and those users requiring stringent hygienic environments an effective secondary support to existing cleaning practices in the fight against bacterial contamination.

Cost savings on nested lockers.  
Manufactured with common sides.  
Quicker to install than equivalent number of single lockers.

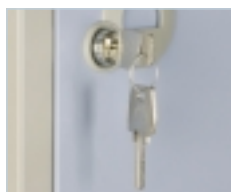
## Locker Accessories



Perforated Lockers



Sloping Top



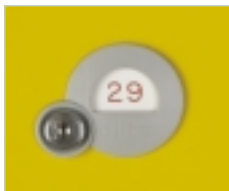
Additional Keys



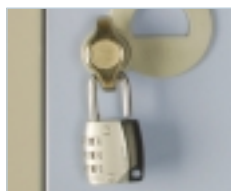
Key Fob



Hanging Rail



Number Plate



Padlock Fitting  
Combination Padlock



£1 Coin Return  
or Token Return Lock

# Storage

## Single Tier Locker

Order Code	Size H x W x Dmm	Single	Nest of 2	Nest of 3
183030S	1800 x 300 x 300	✓	✓	✓
183038S	1800 x 300 x 380	✓	✓	✓
183045S	1800 x 300 x 450	✓	✓	✓
184545S	1800 x 450 x 450	✓	✓	

Supplied with a top shelf and double coat hook

elite GUARD  
Anti-Bacterial Powder Coating 



COLOUR  
page 3  
OPTIONS

## Two Tier Locker

Order Code	Size H x W x Dmm	Single	Nest of 2	Nest of 3
1830302	1800 x 300 x 300	✓	✓	✓
1830382	1800 x 300 x 380	✓	✓	✓
1830452	1800 x 300 x 450	✓	✓	✓
1845452	1800 x 450 x 450	✓	✓	

Supplied with a double coat hook in each compartment

# Lockers



## Six Tier Locker

Order Code	Size H x W x Dmm	Single	Nest of 2	Nest of 3
1830306	1800 x 300 x 300	✓	✓	✓
1830386	1800 x 300 x 380	✓	✓	✓
1830456	1800 x 300 x 450	✓	✓	✓

Supplied with no internal fittings

elite GUARD  
Anti-Bacterial Powder Coating 



## Three Tier Locker

Order Code	Size H x W x Dmm	Single	Nest of 2	Nest of 3
1830303	1800 x 300 x 300	✓	✓	✓
1830383	1800 x 300 x 380	✓	✓	✓
1830453	1800 x 300 x 450	✓	✓	✓

Supplied with no internal fittings

elite GUARD  
Anti-Bacterial Powder Coating 

## Four Tier Locker

Order Code	Size H x W x Dmm	Single	Nest of 2	Nest of 3
1830304	1800 x 300 x 300	✓	✓	✓
1830384	1800 x 300 x 380	✓	✓	✓
1830454	1800 x 300 x 450	✓	✓	✓
1845454	1800 x 450 x 450	✓	✓	

Supplied with no internal fittings

LOCKER  
page 4  
ACCESSORIES